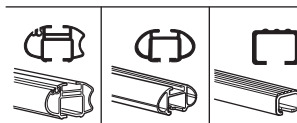
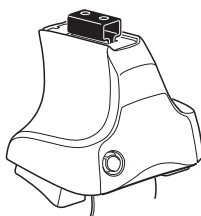


Kit 1350

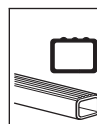
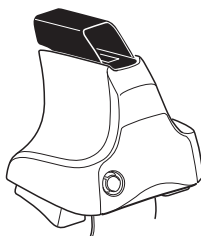
TOYOTA Hilux, 4-dr Double Cab, 05-15

TOYOTA Vigo, 4-dr Double Cab, 04-15

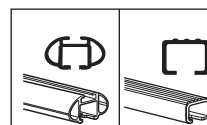
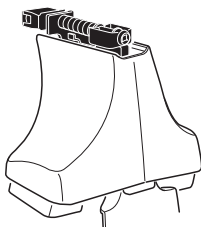
480R
754



480

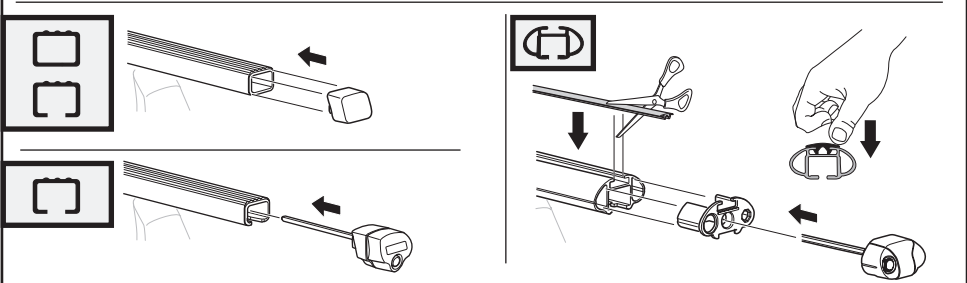
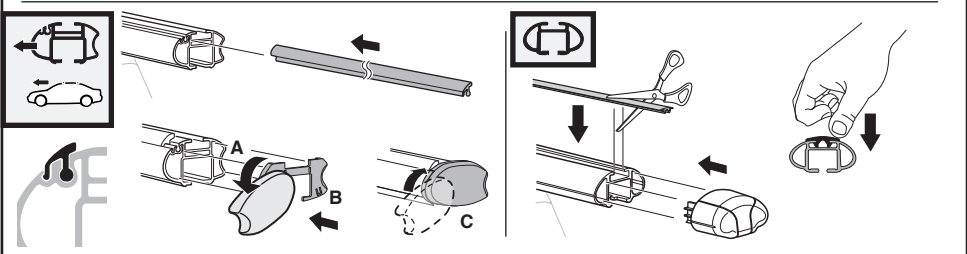
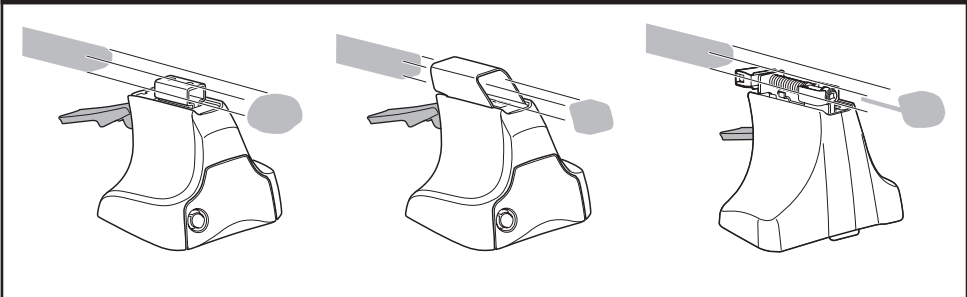
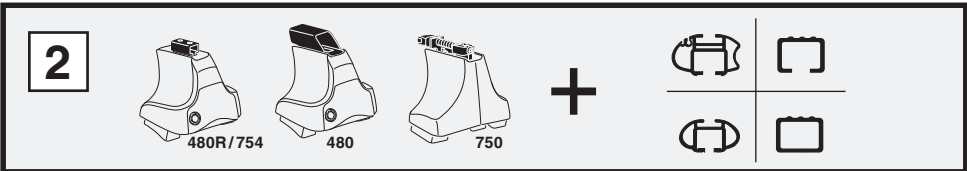
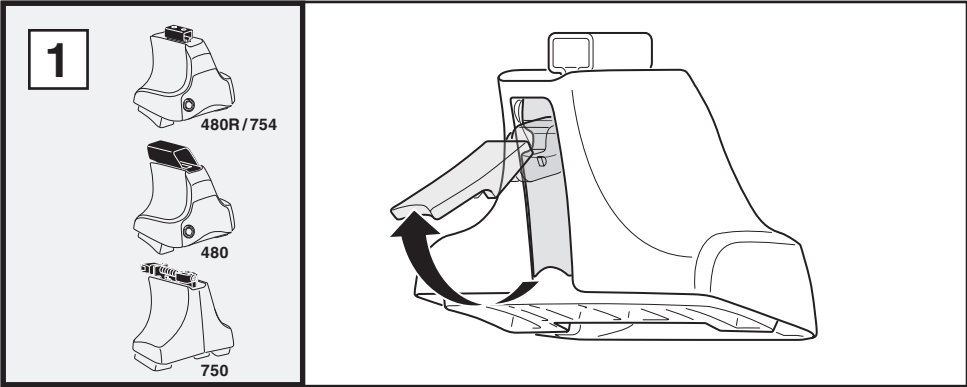


750

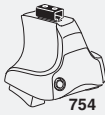


THULE[®]
SWEDEN

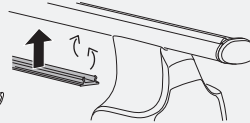
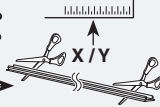
Kit



3



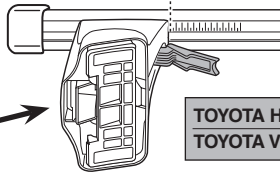
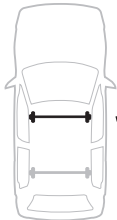
754



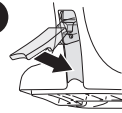
750



1

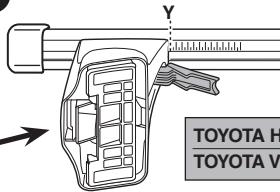


2

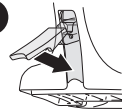


	X
TOYOTA Hilux, 4-dr Double Cab, 05-15	41,5
TOYOTA Vigo, 4-dr Double Cab, 04-15	41,5

1



2



	Y
TOYOTA Hilux, 4-dr Double Cab, 05-15	42
TOYOTA Vigo, 4-dr Double Cab, 04-15	42

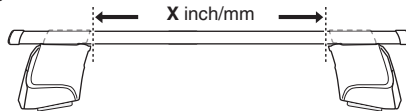


480R

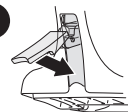


480

1

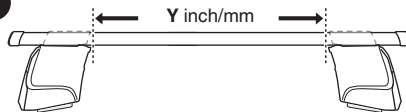


2

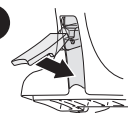


	X inch	X mm
TOYOTA Hilux, 4-dr Double Cab, 05-15	42"	1066 mm
TOYOTA Vigo, 4-dr Double Cab, 04-15	42"	1066 mm

1



2

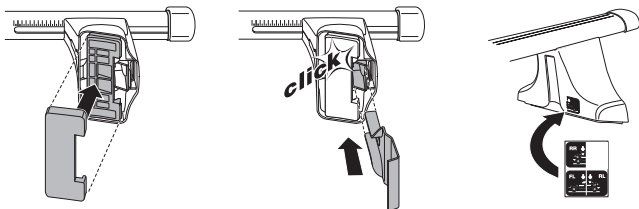
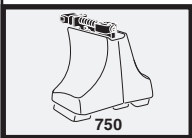
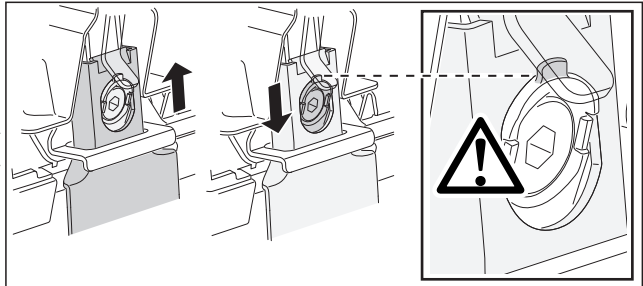
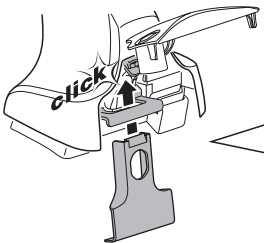
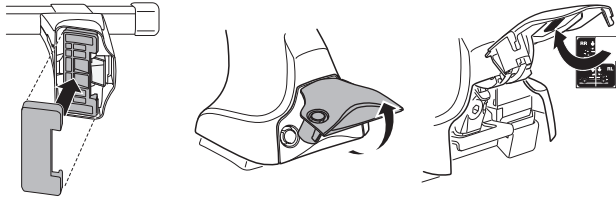
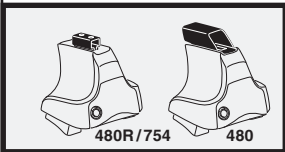
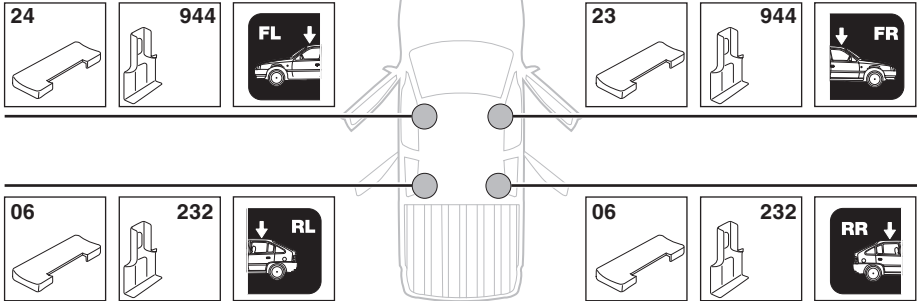


	Y inch	Y mm
TOYOTA Hilux, 4-dr Double Cab, 05-15	42 1/8"	1071 mm
TOYOTA Vigo, 4-dr Double Cab, 04-15	42 1/8"	1071 mm

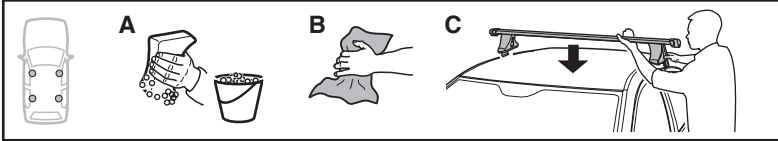
4

TOYOTA Hilux, 4-dr Double Cab, 05-15

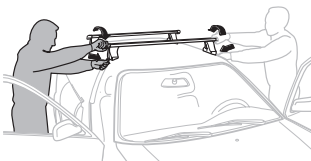
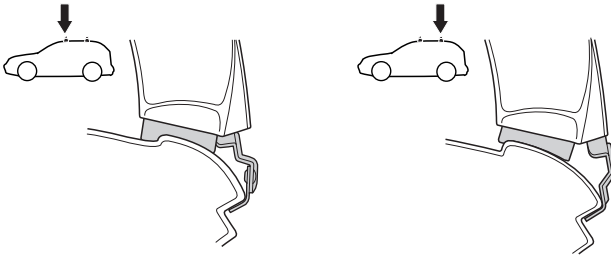
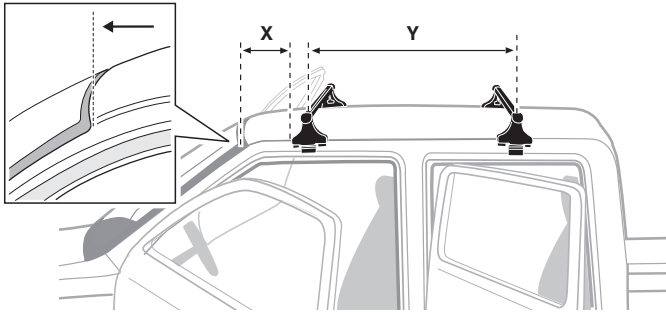
TOYOTA Vigo, 4-dr Double Cab, 04-15



5



	X mm	Y mm	X inch	Y inch
TOYOTA Hilux, 4-dr Double Cab, 05-15	250 mm	720 mm	9 7/8"	28 3/8"
TOYOTA Vigo, 4-dr Double Cab, 04-15	250 mm	720 mm	9 7/8"	28 3/8"



- GB/US** Tighten alternately
D Die Schrauben abwechselnd anziehen
F Serrer alternativement chaque côté
NL Afwisselend aan de linker- en de rechterkant aandraaien
I Alternare il serraggio delle viti
E Apretar alternativamente
PT Aperte alternadamente
S Dra åt växelvis
FIN Kierrä vuorotellen
EST Pinguldage vaheldumisi
LAT Pievelciēt pamīšus
LIT Užsukinėkite pakaitomis
PL Śruby dokręcaj naprzemiennie
RU Затягивайте попеременно

- CZ** Pokręťta bagażnika dokręcaj dokręcaj naprzemiennie.
SK Dotahujte striedavo
SLO Privijajte izmenično.
HR Naizmjenično zategnite
HU Egy mástól függetlenül szorítandó
GR Σφιγγετε εναλλάξ
TR Dönüşümlü sıkın

- 中文** 交替拧紧
한국어 번갈아 가며 조이십시오.
日本語 交互に締め付けてください。
ไทย ชับในแบบสลับ

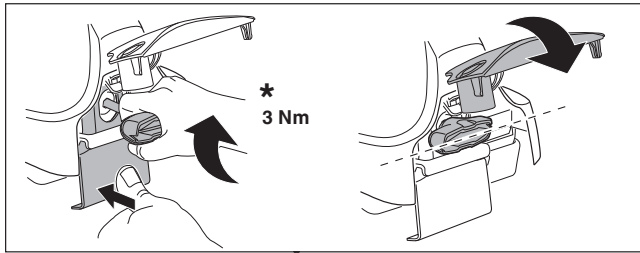
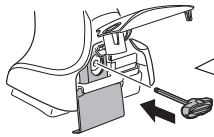
6



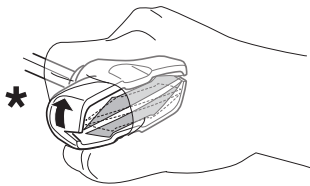
480R/754



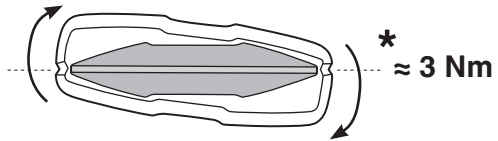
480



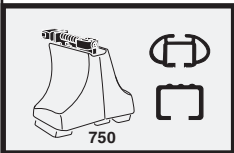
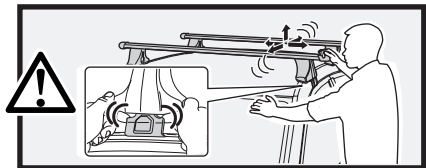
*
3 Nm



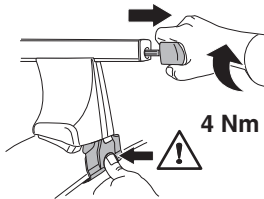
*



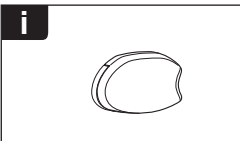
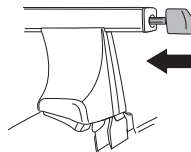
*
≈ 3 Nm



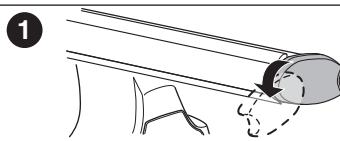
750



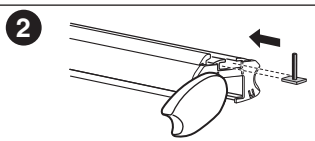
4 Nm



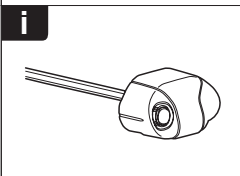
i



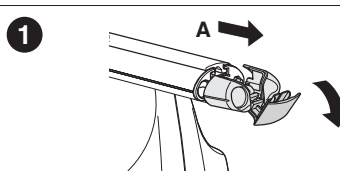
1



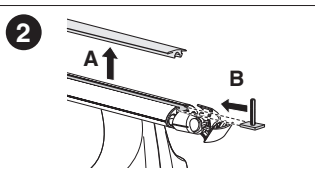
2



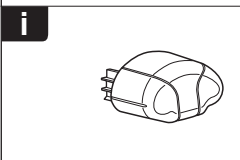
i



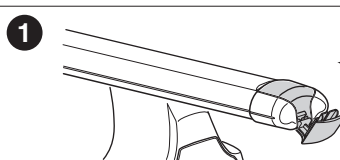
1



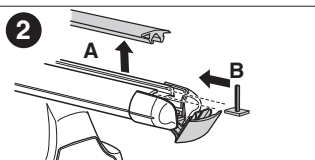
2



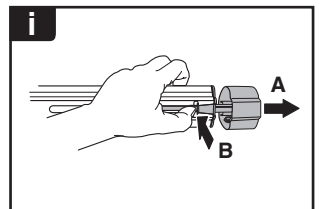
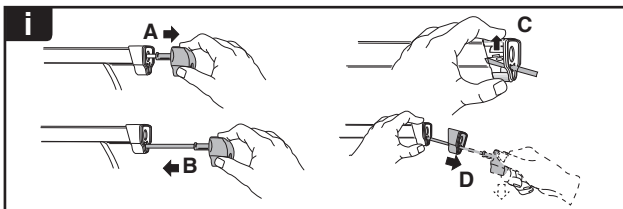
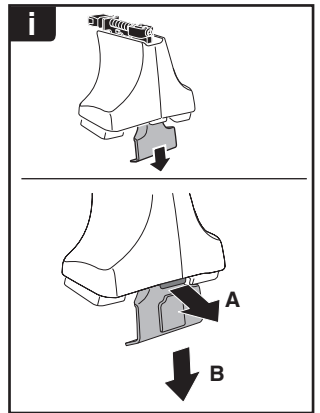
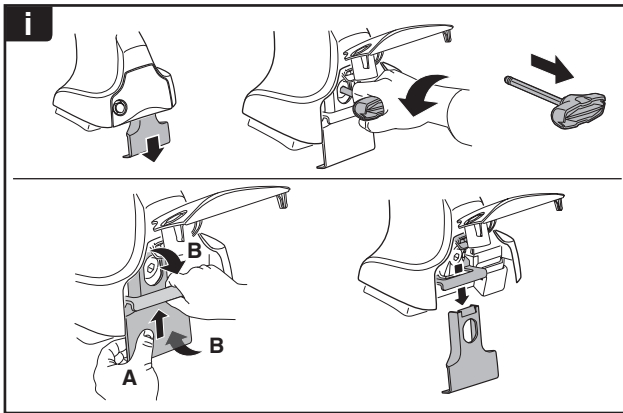
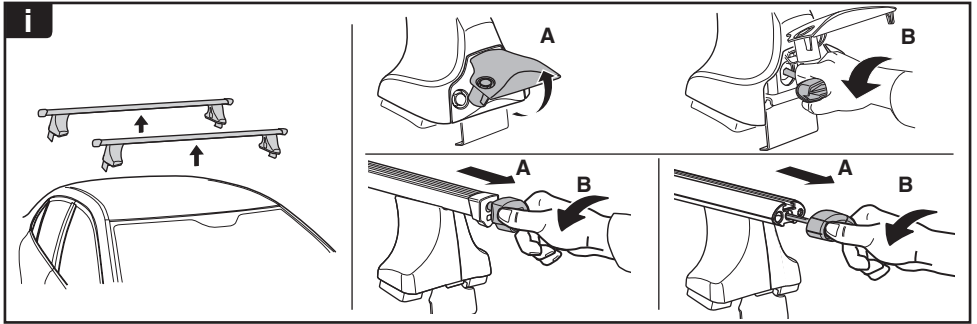
i



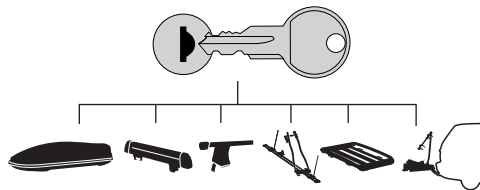
1



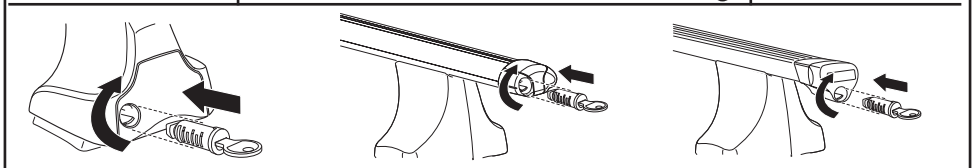
2



THULE
SWEDEN
**ONE
KEY
SYSTEM**



- 544 (x4)
- 596 (x6)
- 588 (x8)
- NA 510 (x10)
- EUR 452 (x12)
- ASIA



WW ▶ Thule Sweden AB, Box 69, 330 33 Hillerstorp, SWEDEN
 NA ▶ Thule Inc., 42 Silvermine Road, Seymour, Connecticut 06483, USA

info@thule.com
 customer.service@thule.com

www.thule.com



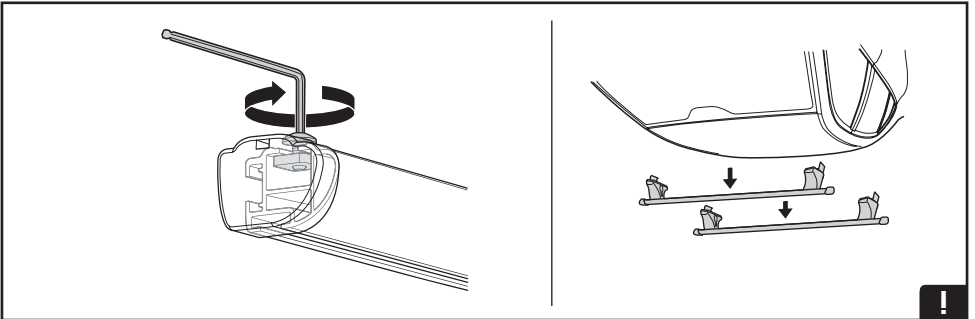
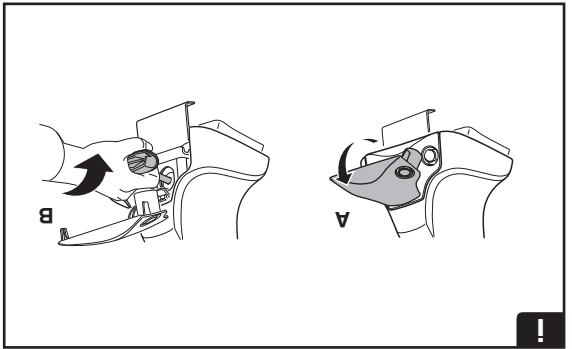
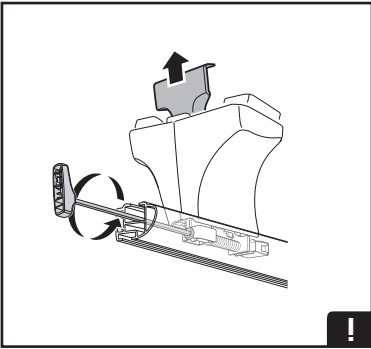
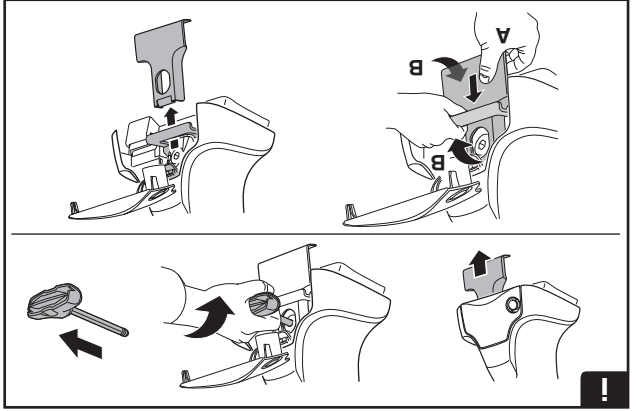
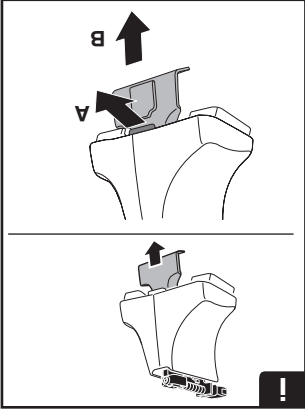
www.thuleprofessional.com

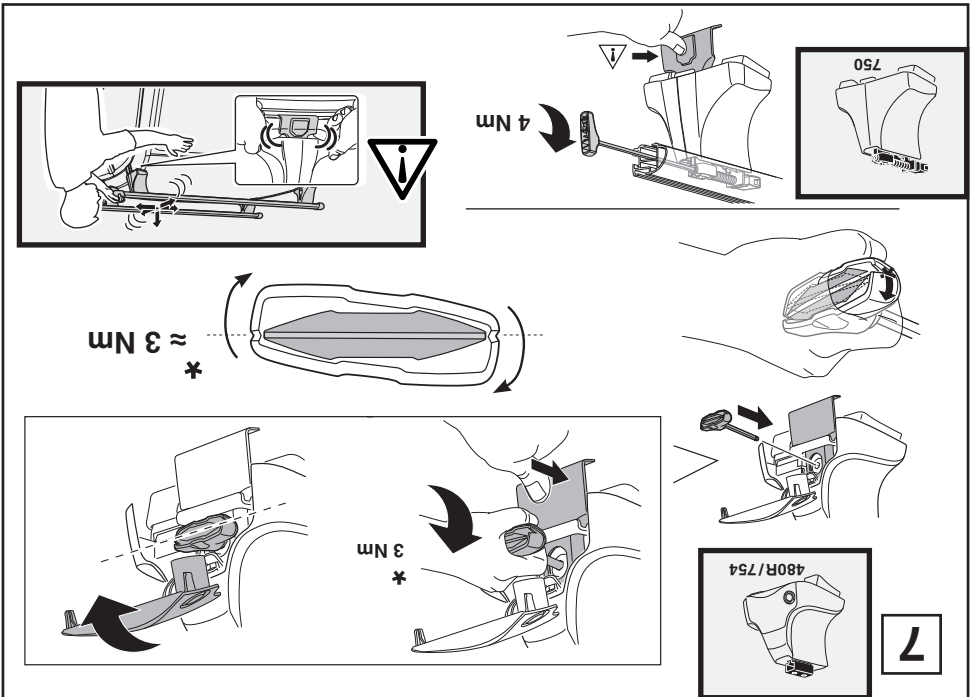
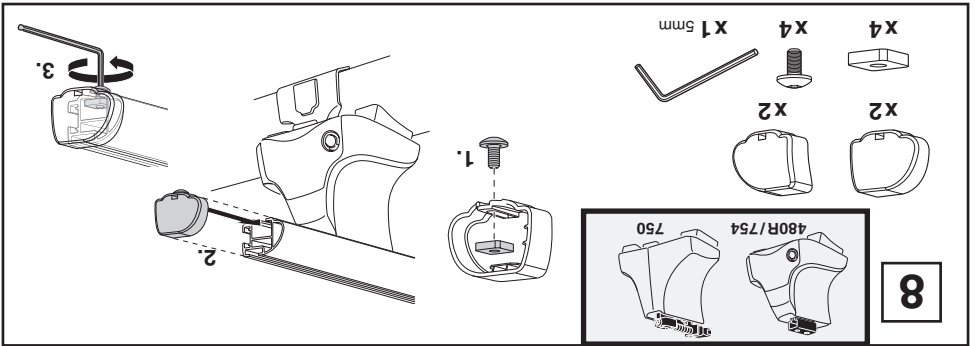
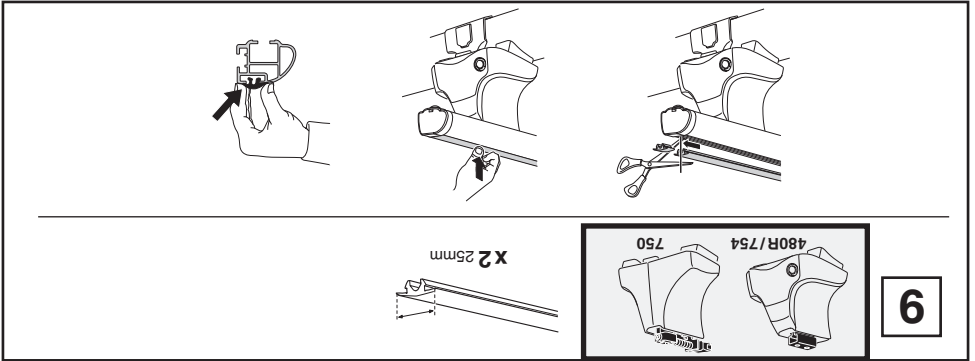


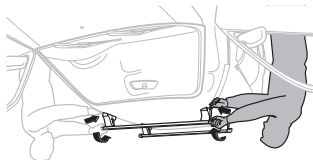
customer.service@thule.com



Thule Inc., 42 Silvermine Road, Seymour, Connecticut 06483, USA
Thule Sweden AB, Box 69, 330 33 Hillerstorp, SWEDEN

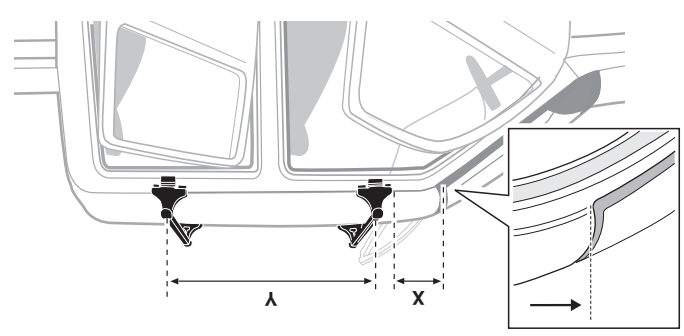
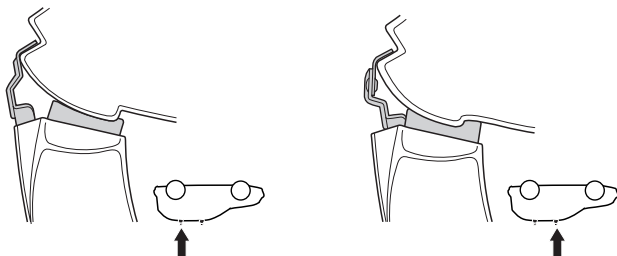




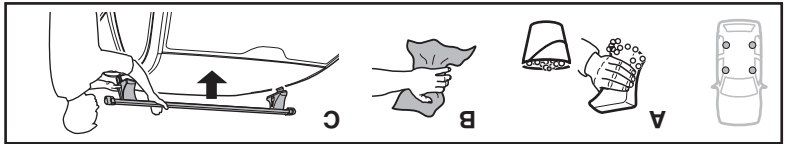


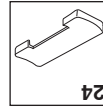
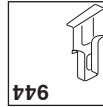
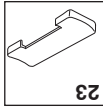
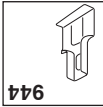
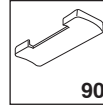
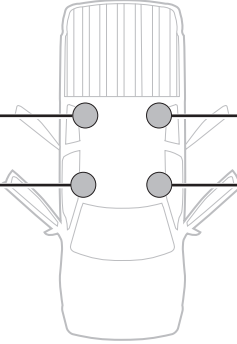
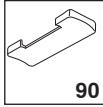
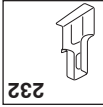
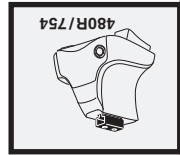
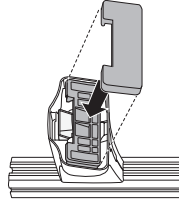
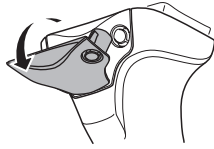
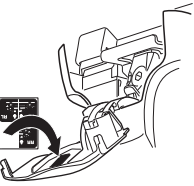
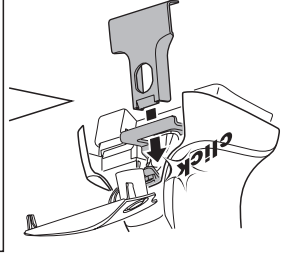
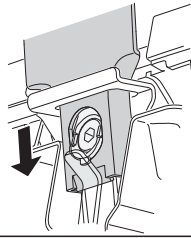
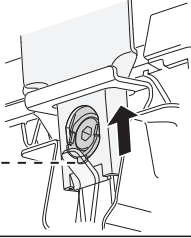
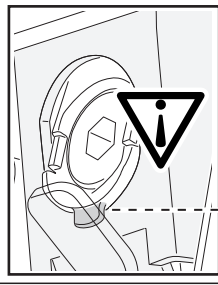
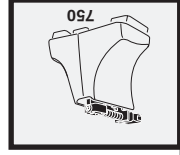
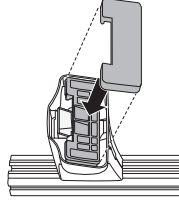
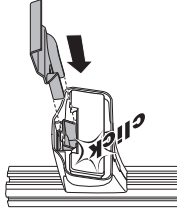
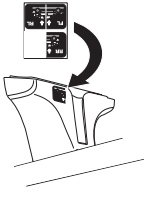
GB/US Tighten alternately
 D Die Schrauben abwechselnd
 F anziehen
 NL Wisselend aan de linker- en de
 I rechterkant aandraaien
 E Alternare il serraggio delle viti
 PT Aperte alternadamente
 S Dra åt växelvis
 FIN Kierrä vuorotellen
 EST Pinguldage vaheldumisi
 LAT Pļevcieliet pamāsus
 LT Užskinkite pakalomis
 PL Słubij dokręcaj naprzemiennie
 RU Затягивайте попеременно

CZ Pokrýta bagazníka dokręcaj
 SK Dotiahnuť striedavo
 SLO Serrer alternativement chaque côté
 HR Atwisselend aan de linker- en de
 HU rechterkant aandraaien
 GR Alternare il serraggio delle viti
 TR Açtırmaları sırayla
 CN 交替拧紧
 KR 좌우 교대로 조이십시오.
 JP 交互に締め付けてください。
 UA Підтягуйте по черзі

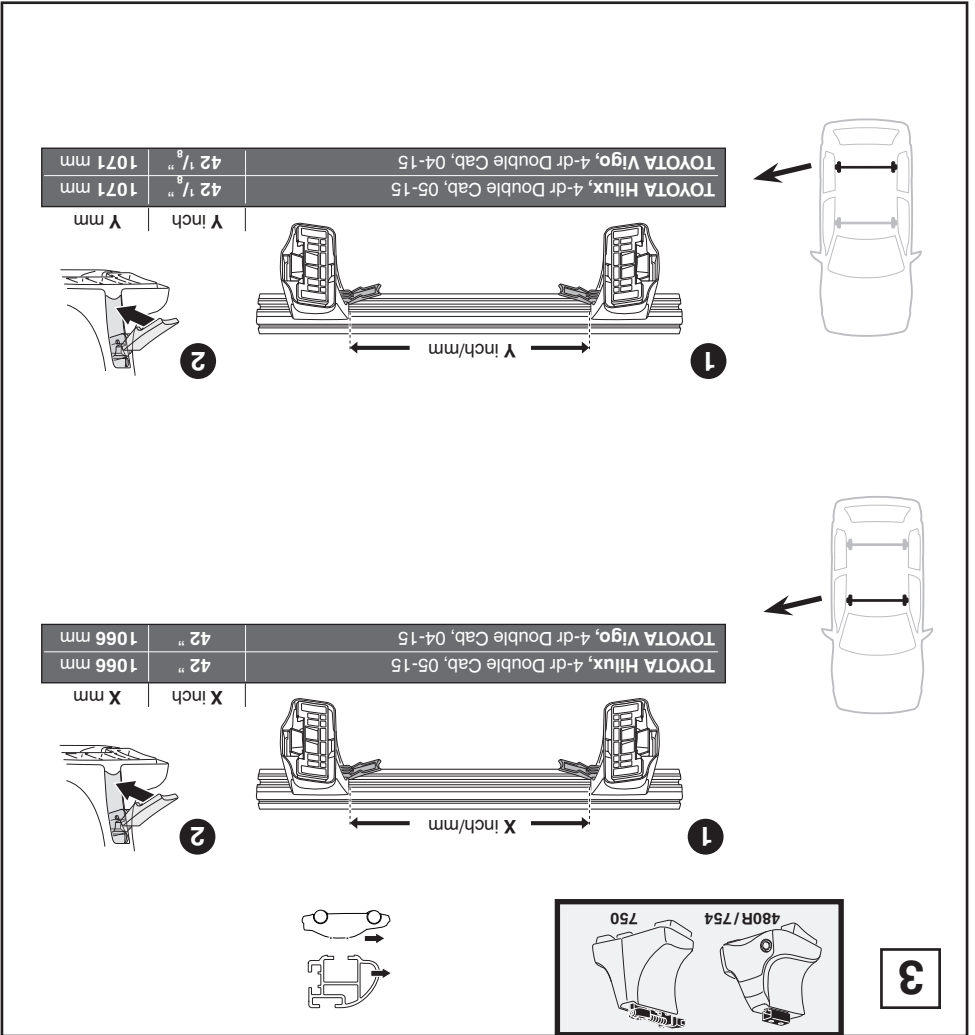
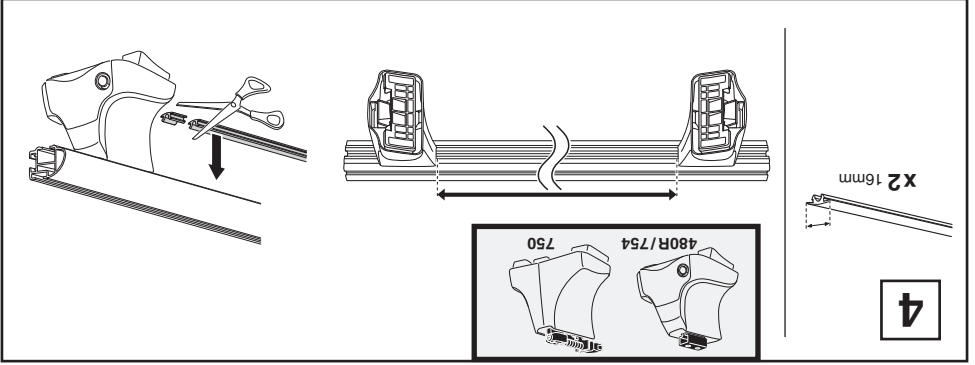


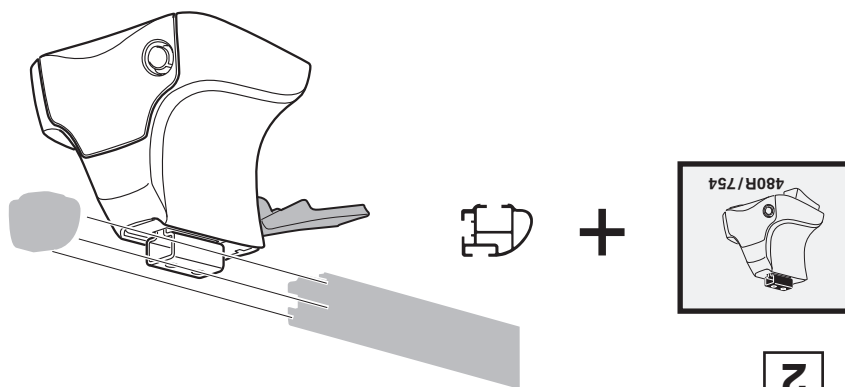
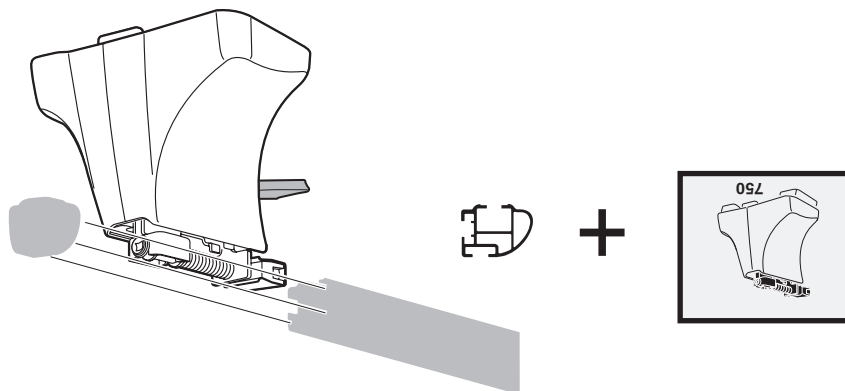
TOYOTA Hilux, 4-dr Double Cab, 05-15	250 mm	720 mm	9 7/8"	28 3/8"
TOYOTA Vigo, 4-dr Double Cab, 04-15	250 mm	720 mm	9 7/8"	28 3/8"
	X mm	Y mm	X inch	Y inch



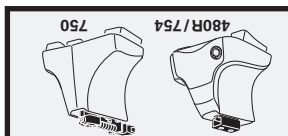
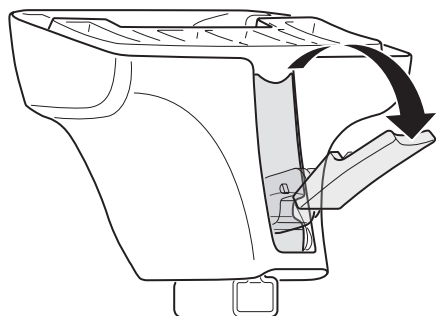


TOYOTA Hilux, 4-dr Double Cab, 05-15
TOYOTA Vigo, 4-dr Double Cab, 04-15

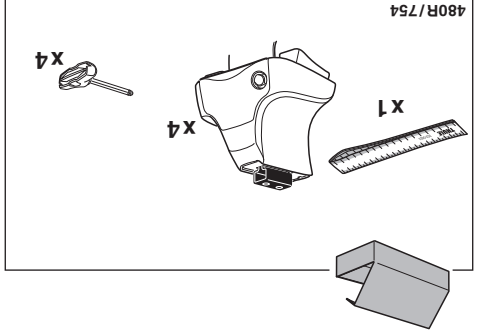
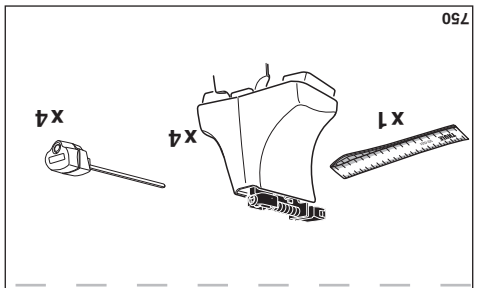
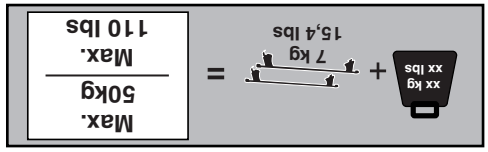
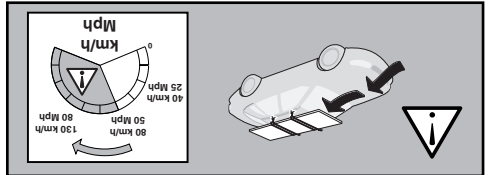
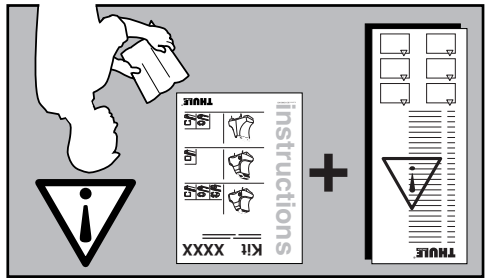
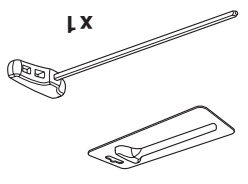
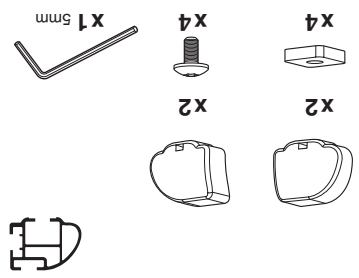
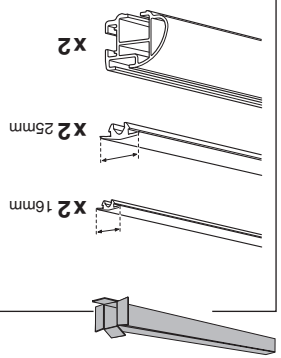
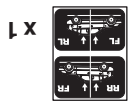
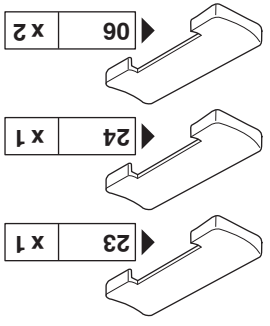
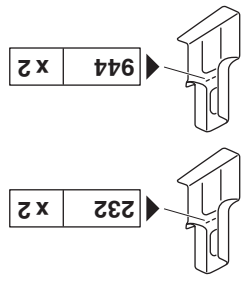




2



1

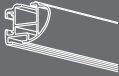
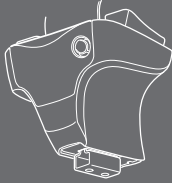


instructions

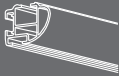
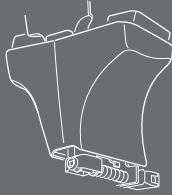
Kit 1350

TOYOTA Hilux, 4-dr Double Cab, 05-15
TOYOTA Vigo, 4-dr Double Cab, 04-15

480R
754



750



THULE
SWEDEN

PROFESSIONAL

ISO 11154-E